

# VE Configure in simple mode

## Using VE Configure in simple mode

As most of you know, the VE Configure program is probably the most extended program in the market to configure and monitor chargers, inverters and charger inverters.

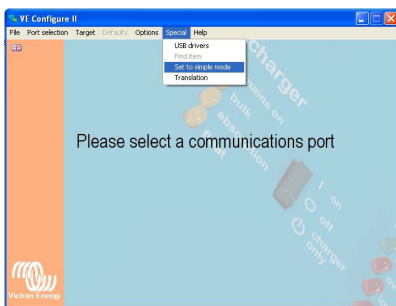
The program is also used to upload specialized settings in Victron systems in the OEM market, this even can be done by people other than electro mechanics. In these circumstances the VE configure program is often too complicated for people who are not used to working with energy systems.

Therefore there is a new easy to use solution within VE Configure to upload these configure settings files to the system without being able to have other settings done.

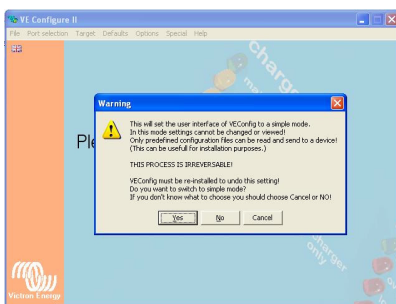
The new VE Configure with the simple mode feature is downloadable from [www.victronenergy.com](http://www.victronenergy.com)

Steps to activate the Simple Mode:

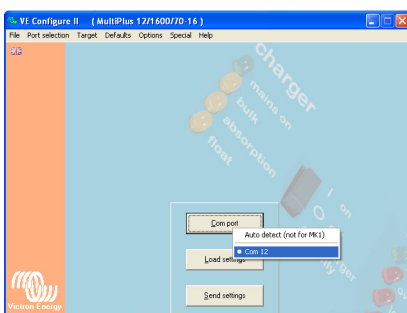
Step 1: Select "set to Simple Mode" in the [ Special ] menu.



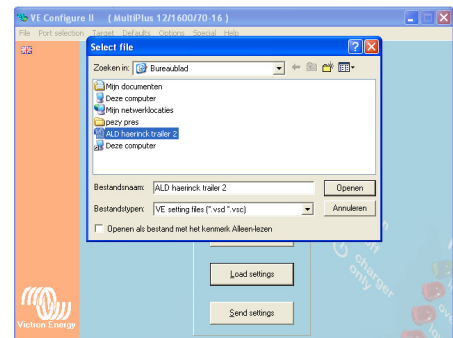
Be aware that this selection is NON reversible! If the "Simple Mode" is not wanted anymore, the VE Configure software must be uninstalled and installed again from the website.



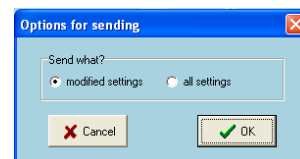
Step 2: When switched to the Simple Mode, this screen is shown which allows to choose a communications port.



Step 3: After selected "load settings" simply choose the vsd file which should be uploaded in the Victron unit.



Step 4: When sending, there is an option to go for modified settings or all settings, modified settings will be faster.



Remarks:

The language of VE Configure can be changed. In order to download the language file an internet connection is needed.

